

Pattern no: **A015**

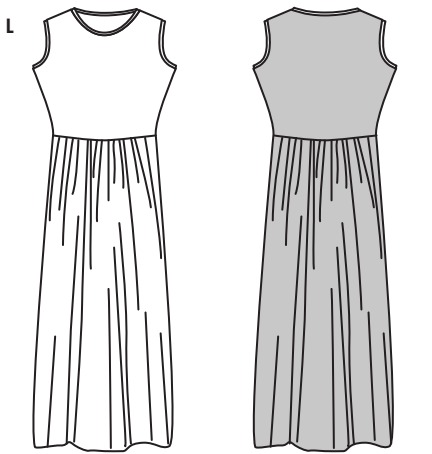
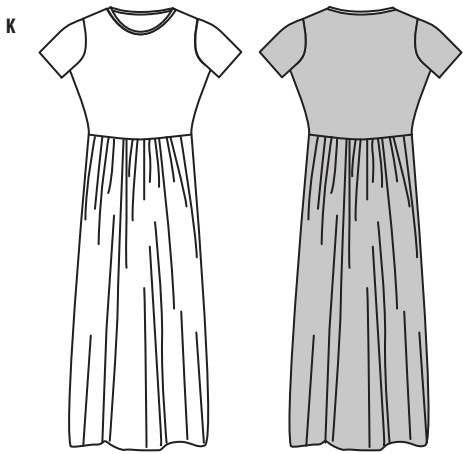
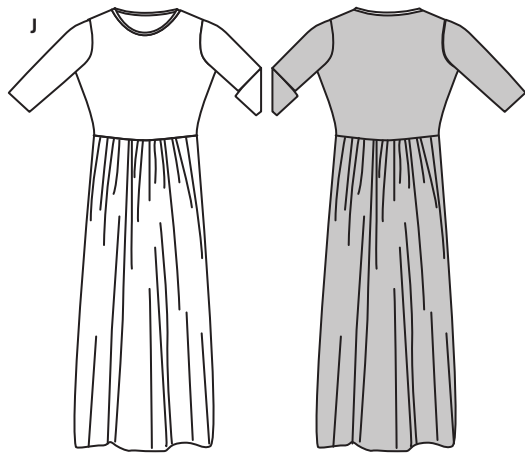
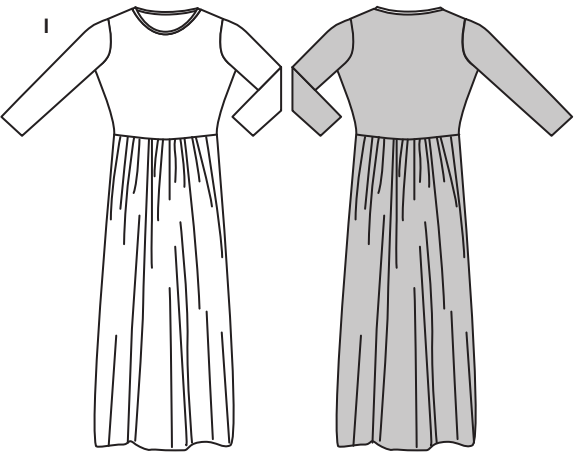
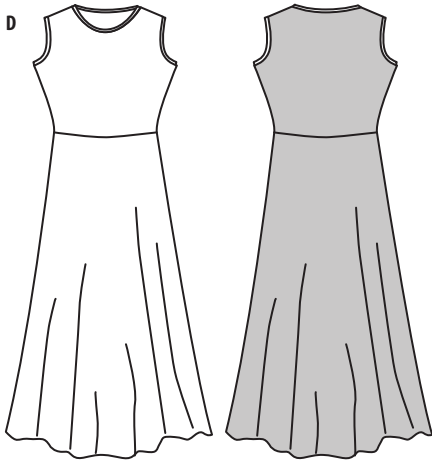
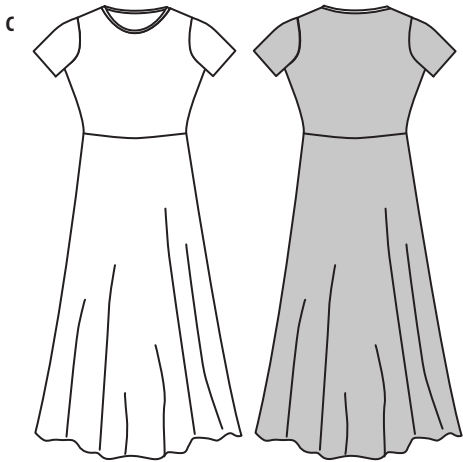
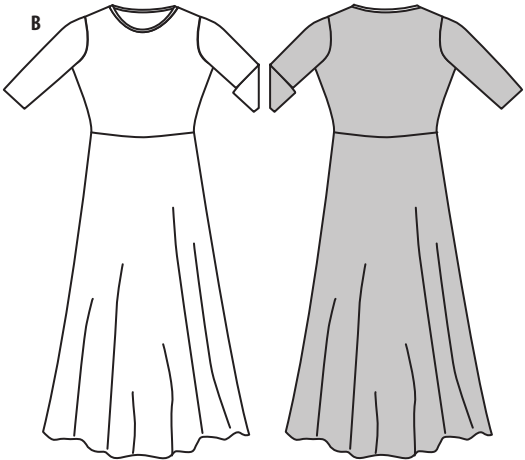
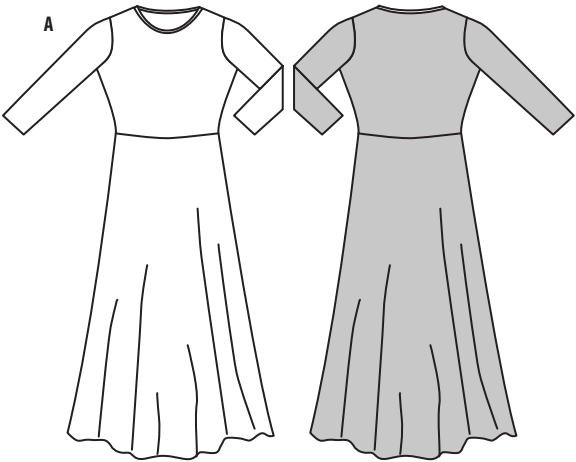
Size: **Adult XS - 3XL**

Difficulty Level: ● ○ ○ ○

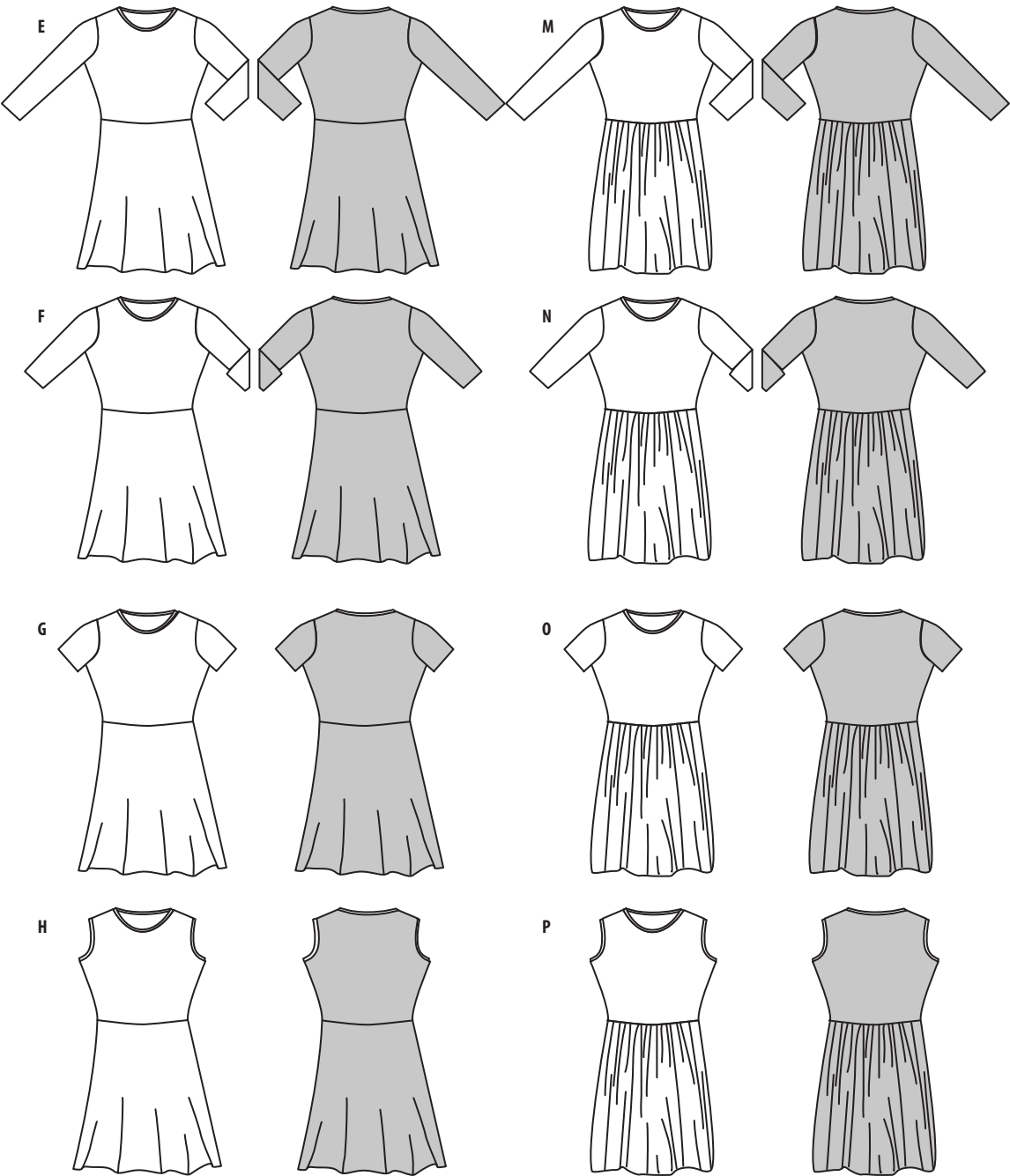
## Maxi Dress



Pattern Variations:



Pattern Variations:



Materials:

- Fabric suggestions: Cotton Lycra / Viscose Lycra / Jersey knit / Ribbed Knit / Roma / Trylobal / BonBon.
- Cotton thread in matching colour.

Fabric Quantity: Quantities below are with nap, additional fabric may be needed to match design or for shrinkage.

Size:	XS m / yds	S m / yds	M m / yds	L m / yds	XL m / yds	2XL m / yds	3XL m / yds
A							
150cm / 60inch	2.50 / 2 ¾	2.60 / 2 ⅞	2.70 / 3	2.90 / 3 ¼	3.10 / 3 ½	3.40 / 3 ¾	3.90 / 4 ¾
B							
150cm / 60inch	2.50 / 2 ¾	2.60 / 2 ⅞	2.70 / 3	2.70 / 3	3.00 / 3 ¾	3.20 / 3 ½	3.70 / 4 ½
C							
150cm / 60inch	2.50 / 2 ¾	2.60 / 2 ⅞	2.70 / 3	2.70 / 3	2.80 / 3 ⅛	3.10 / 3 ½	3.40 / 3 ¾
D							
150cm / 60inch	2.60 / 2 ⅞	2.70 / 3	2.80 / 3 ⅛	2.80 / 3 ⅛	2.90 / 3 ¼	3.00 / 3 ¾	3.50 / 3 ⅞
E							
150cm / 60inch	1.50 / 1 ¾	1.50 / 1 ¾	1.60 / 1 ¾	1.60 / 1 ¾	1.90 / 2 ⅓	2.20 / 2 ½	2.60 / 2 ⅞
F							
150cm / 60inch	1.50 / 1 ¾	1.50 / 1 ¾	1.60 / 1 ¾	1.60 / 1 ¾	1.80 / 2	2.00 / 2 ¼	2.40 / 2 ⅝
G							
150cm / 60inch	1.50 / 1 ¾	1.50 / 1 ¾	1.60 / 1 ¾	1.60 / 1 ¾	1.70 / 1 ⅞	1.90 / 2 ⅓	2.20 / 2 ½
H							
150cm / 60inch	1.60 / 1 ¾	1.60 / 1 ¾	1.70 / 1 ⅞	1.70 / 1 ⅞	1.70 / 1 ⅞	1.80 / 2	2.20 / 2 ½
I, M - Bodice & Sleeve							
150cm / 60inch	0.85 / 1	0.90 / 1	0.95 / 1 ⅛	0.95 / 1 ⅛	1.00 / 1 ⅛	1.10 / 1 ¼	1.50 / 1 ¾
J, N - Bodice & Sleeve							
150cm / 60inch	0.85 / 1	0.90 / 1	0.95 / 1 ⅛	0.95 / 1 ⅛	1.00 / 1 ⅛	1.10 / 1 ¼	1.30 / 1 ½
K, O - Bodice & Sleeve							
150cm / 60inch	0.75 / ⅞	0.75 / ⅞	0.80 / ⅞	0.80 / ⅞	0.90 / 1	0.90 / 1	1.10 / 1 ¼
L, P - Bodice & Ribbing							
150cm / 60inch	0.55 / ¾	0.55 / ¾	0.60 / ¾	0.60 / ¾	0.60 / ¾	0.70 / ⅞	1.10 / 1 ¼
I, J, K, L - Skirt Long*							
150cm / 60inch	1.00 / 1 ⅛	1.10 / 1 ¼	1.10 / 1 ¼	1.10 / 1 ¼	1.10 / 1 ¼	1.20 / 1 ¾	1.20 / 1 ¾
M, N, O, P - Skirt Short*							
150cm / 60inch	0.50 / ⅝	0.50 / ⅝	0.50 / ⅝	0.50 / ⅝	0.55 / ¾	0.55 / ¾	0.55 / ¾

*\*The gathered maxi skirt panel is a standard 150cm (60 inch) wide for all sizes and is gathered to fit the waist.*  
*The Fabric quantities for the gathered skirt (variations I-P) are based on one of these standard 150cm (60 inch) panels. Thus for smaller sizes the gathers will be fuller than for bigger sizes.*  
*For a trimmed down look with less gathers, decrease the width to your liking (buy once the amount of fabric for the skirt).*  
*For a fuller skirt with more gathers, cut the skirt twice (buy twice the amount of fabric for the skirt).*